

**Press Release 10/2023**

## **ME – Wilkhahn's Office Task Chair, Tailor Made for Superb Comfort and Maximum Versatility**

When Wilkhahn designs office chairs, it makes healthy sitting for everyone top priority. And its new ME chair is no exception. However the chair's configured, its perfect synchronous adjustment mechanism and optional, patented progressive motion module prompts an intuitive change of posture. As a result, it boosts office workers' creativity, well-being, and levels of fitness. What's more, the new office task chair range is a modular solution. The result is a virtually endless variety of models. All components can be combined to suit preferences, making the chair exceptionally good value. ME is custom configurable to match the kind of movement and settings required. It also comes in a distinctive design that creates a cohesive aesthetic throughout a company.

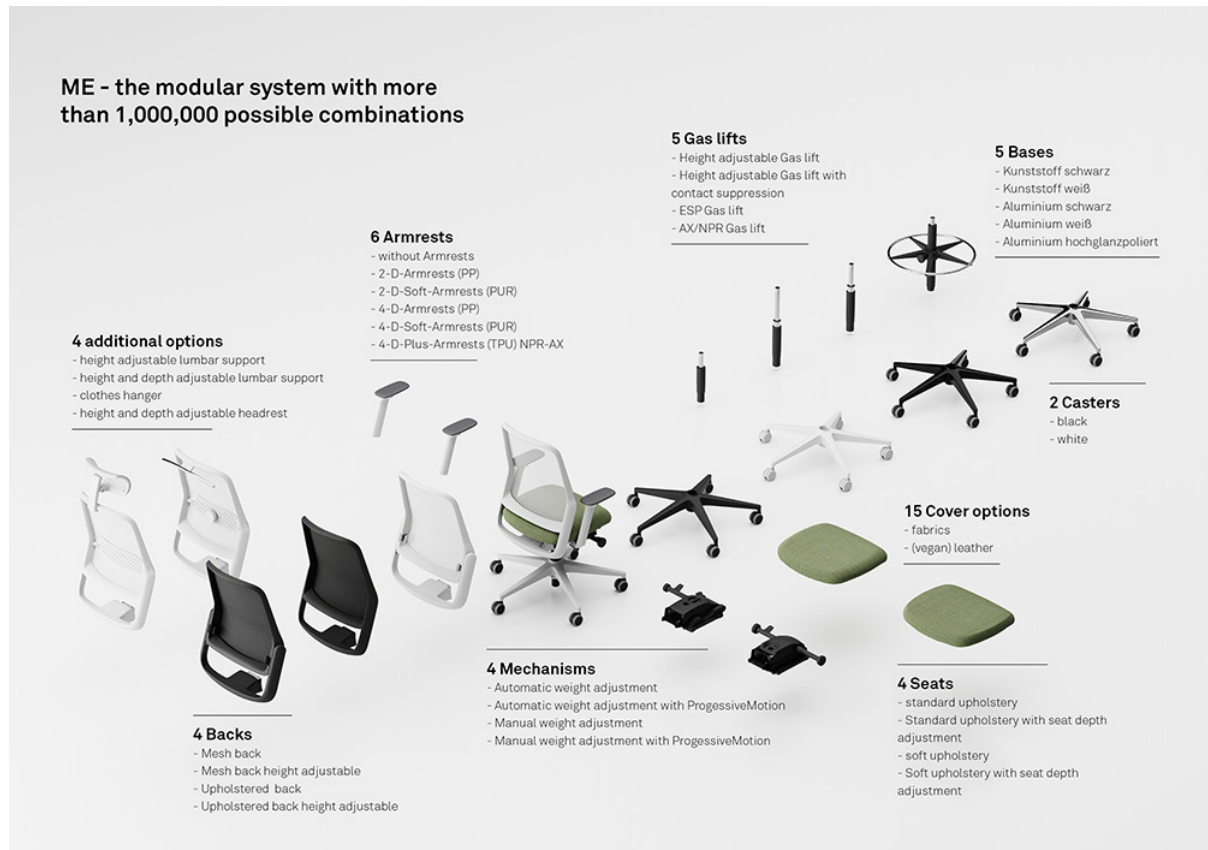
**Bad Münden, October 2023.** Wilkhahn's new ME office task chair is a modular solution with a broad selection of functional, comfort, and design options. This is a typical task chair range that also offers models with an elevated sitting position (ESP) to encourage people to embrace sit-stand options at height-adjustable tables, as well as counter chairs. All models can be combined so that ME matches requirements to perfection.



The modular nature of Wilkhahn's ME office task chair enables almost infinite and unique design options in a human-centered workplace. Photo: Wilkhahn

### **Modular design**

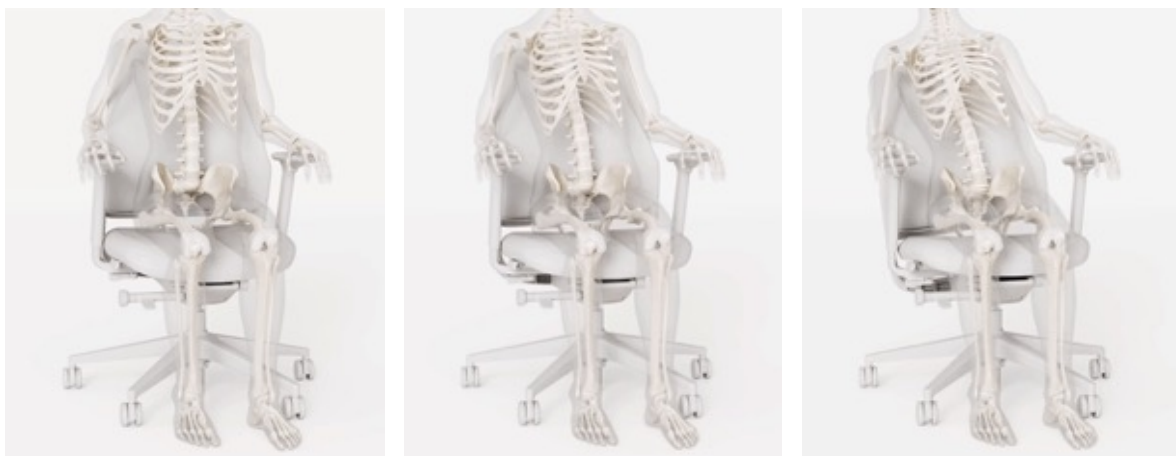
An airy mesh or super-soft upholstered backrest? The ME office task chair provides both and gives planners a broad range of design options to play with. For instance, it can have height-adjustable backrest frames, depth-adjustable or tiltable seats, or soft padding for exceptionally superior comfort. Height-adjustable frames made of plastic or aluminum, or armrests with two- or four-dimensional ranges of motion also belong to the range. Accessories such as lumbar support with adjustable height and depth and a headrest, or an integrated clothes hanger round out the versatile modular solution. The combinability of all components means ME meets all international certification standards, including the new AX, which confirms that the chair's also suitable for very tall or very short people.



This versatility makes ME an ideal office task chair for the most diverse of interior design concepts. All the many combinations enable configuration of over 1 million variants.  
Image: Wilkhahn

## Progressive Motion for intuitive movement

Despite all the many ways ME can be combined, the focus on maximum ergonomic comfort for every conceivable variant takes center stage. In this respect, ME goes the extra mile thanks to the Progressive Motion module, which was custom developed for Wilkhahn. The patented technology ensures that the office task chair encourages users to engage in multi-dimensional movement, but it provides firm support at the same time.



The more people move while sitting, the more comfortable and happier they will be. Due to the patented Progressive Motion module, ME keeps users' muscles in the back healthy because of the three-dimensional movement of the backrest. Images: Wilkhahn

## Attractive design and ease of use

ME is designed to make the backrest and seat appear to be an organic unit, which looks appealing from any vantage point thanks to its rounded edges. In addition to its outstanding ergonomics, the chair is user friendly because it's so intuitive to use. Its controls are placed in handy positions and made of high-quality materials to make using the chair a straightforward and pleasant experience. The ESP variant allows models to be raised to a seating height of up to 62 centimeters and encourages users to embrace sit-to-stand options at height-adjustable tables.



The mesh-covered version of ME marries comfort with a stylish and transparent aesthetic. Combined with the Progressive Motion module, the manual or automatic synchronous adjustment mechanism ensures users are prompted to move even more. Photos: Wilkhahn

## Low shipment volume for more sustainability

It's a given that Wilkhahn ensures ME meets stringent sustainability requirements and international certification standards and is produced in Bad Münster in the north of Germany. ME's shipment volume can also optionally be cut by 66 percent, which saves costs and carbon emissions while it's stored or shipped.

Some 80 percent of the mesh backrest is made of post-consumer recycled polyester and the materials used can be sorted according to type, all of which adds up to a good carbon footprint. As a result, ME is both environmentally and resource friendly and delivers first-class comfort and quality at a fair price.

ME can be ordered from October 2023 onward.

## Media contact:

Wilkhahn  
Wilkening + Hahne GmbH+Co.KG  
Frederik Bellermann  
Fritz-Hahne-Strasse 8  
31848 Bad Münster, Germany  
Tel. +49 (0) 5042 999 271  
[frederik.bellermann@wilkhahn.de](mailto:frederik.bellermann@wilkhahn.de)

mai public relations GmbH  
Arno Heitland  
Leuschnerdamm 13  
10999 Berlin, Germany  
Tel. +49 (0) 30 66 40 40 553  
[wilkhahn@maipr.com](mailto:wilkhahn@maipr.com)